

ROAD INDEX

A	ANNE LANE D2	J	JACKSON DRIVE PVT A6	S	SAYBROOK LANE D2
	ASCOT LANE E3-4		JACOBS DRIVE (PVT) F2		SELLEWOOD DR D9
	AUBURN ROAD C1-C7		JENNIFER DRIVE B2		SHADOW WOOD CIR F4-F5
	AUBURN LAKES DRIVE A3				SIGNAL HILL (PVT) A3
	AUBURNDALE DR B6				SNOW RD F1-F2
					SOUTH BLVD (PVT) A6
					SOUTH PIN TAIL (PVT) A3
					SPICEBERRY CIR C4
					STAFFORD RD A2-E2
					STAFFORDSHIRE CT D2
					SUNSET DR B5-A6
B	BAINBRIDGE ROAD A4	K	KASIK DRIVE PVT A6	T	TAYLOR MAY RD. A5-E5
	BARTHOLMEW RD. A6-D6		KOPAS DRIVE (PVT) D5		THORPE ROAD B5-B7
	BASS RUN (PVT) A3				TIMBER LN. C3
	BLUE SPRUCE TR (PVT) A83				TWIN CREEKS (PVT) A3
	BRIDGE CREEK TR C4	L	LAKE DRIVE (PVT) A6	U	U.S. 422 A4-F4
	BROADWAY DRIVE (PVT) A6		LINUSAY LANE B2		
	BROOKFIELD DRIVE A7		LONG DRIVE (PVT) A3		
C			LONGVIEW TRAIL C4		
	CARRIAGE HILL D3		LOST LAKES TRAIL A2		
	CHICKASHAY LANE B6		LUCKY BELL LANE AI-A2		
	CHIPPING LANE (PVT) A3		LAWMASTER DRIVE B4H		
	CINNAMON TRAIL C4-5	M		V	VALLEY ROAD F1-F4
	CINNAMON TRAIL C4-5		MARYDALE DRIVE E1		VICTORIA DRIVE D2
	CLEVELAND DRIVE PVT. A6		MEADOW LANE C3		
	CLUB LANE (PVT) A5		MESSENGER ROAD E1-D4		
	GOLDCHESTER DRIVE E3-4		MT. PLEASANT DRIVE F4-A6		
	COLONIAL COURT A6		MUNN ROAD BI-B7		
	CRACKEL ROAD A7-E7				
	CREEKSIDE DRIVE A4				
	CREEKSTONE DRIVE C3				
	CRYSTAL TRAIL A6				
	CURRY LANE C3				
D					
	DERBYSHIRE LANE B4	N	NORTH BLYD. PVT. A6	W	WASHINGTON STREET A3-E4
	DOWNY LANE (PVT) A3		NORTH PIN TAIL (PVT) A3		WATERFORD TRAIL A2
	DOWNY GLEN TR D2				WEATHERTOP LANE A1
E					WHISPER WOOD CIRCLE B6
	EAGLES POINTE (PVT) A3				WHITE OAK DRIVE A5-B5
	EDWARD LANE A7				WIDGSON DRIVE A3
	EASTWOOD DRIVE B6				WINDWARD WAY (PVT) C3-C4
F		O	OVERLOOK BROOK CTR (PVT) A3		WINGATE DR. C4
	FAIRWAY VIEW (PVT) A3		OVERLOOK BROOK DRIVE (PVT) A3		WOOD ACRE TRAIL A2
	FOX ROAD F6-F7				WOODSONG WAY (PVT) A3
	FRANKS ROAD B3-D1	P		Y	
	FRANKLIN ROAD (PVT) B6		POINTE BREEZE (PVT) A3		
			PRIMROSE COURT A6	Z	
G					
	GREATWOOD LANE D5	Q	QUINN ROAD A5-A6		
	GREENWAY TRAIL (PVT) A2				
H					
	HEATHER HILL (PVT) A3	R	RAVENNA ROAD E1-E7		
I			RIVERWOOD LANE AI		
			ROBIN WOOD LANE D 2-3		
			ROBERT LN. PG. F		
J					
K					
L					
M					
N					
O					
P					

- ① AUBURN ELEM. SCHOOL
- ② AUBURN COMMUNITY CHURCH
- ③ AUBURN TOWN HALL
- ④ AUBURN VOL. FIRE DEPT.
- ⑤ BEARTOWN LAKES RESERVATION - PARK

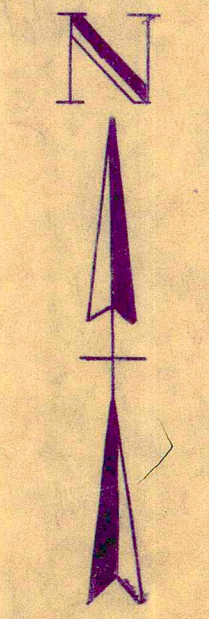
AUBURN TOWNSHIP

SCALE: 1" = 2000'

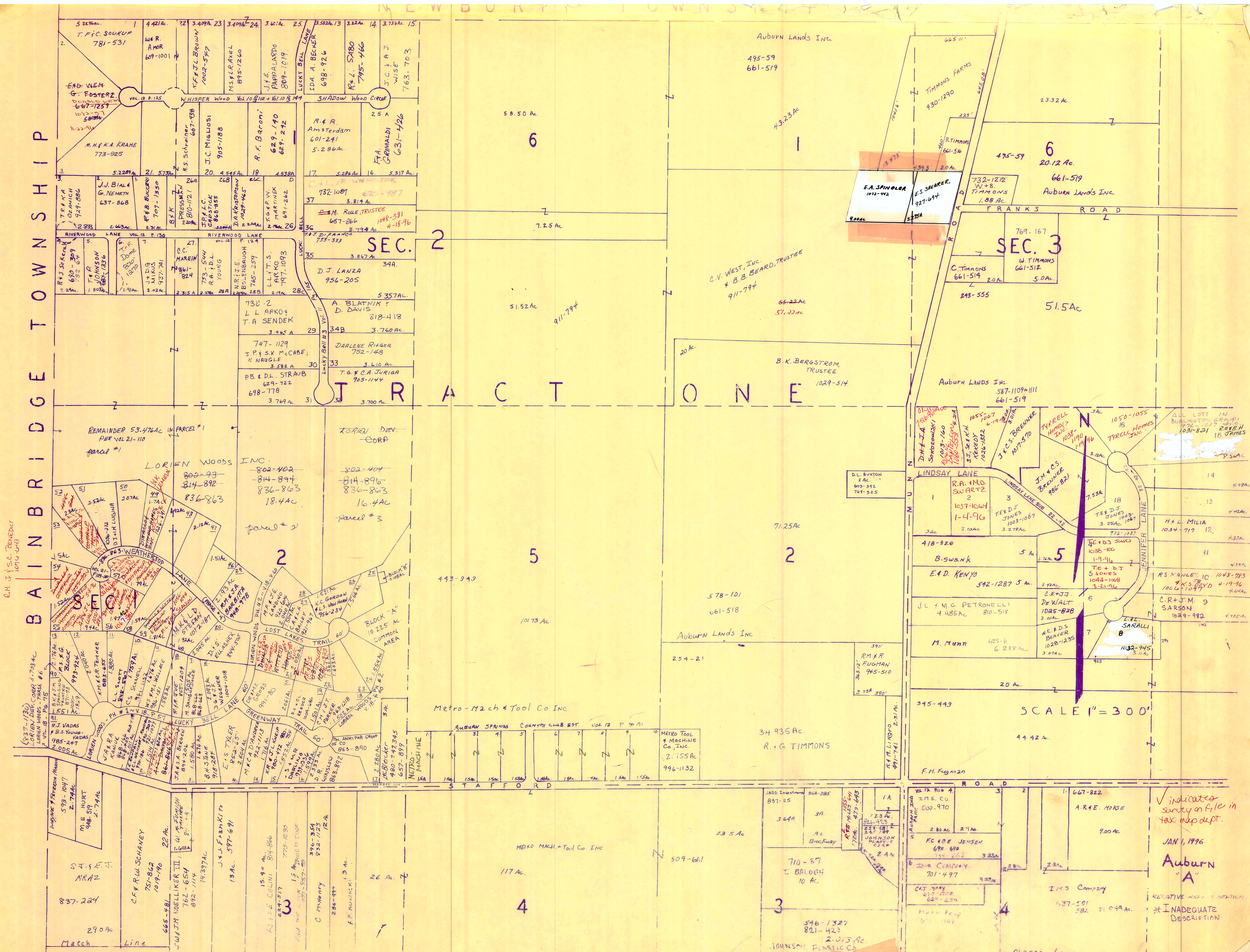
ROBERT L. PHILLIPS
GEAUGA COUNTY ENGINEER

UNPAVED ROAD (dashed line)
PAVED ROAD (solid line)

TOWNSHIP LINE (dashed line)
COUNTY LINE (dotted line)

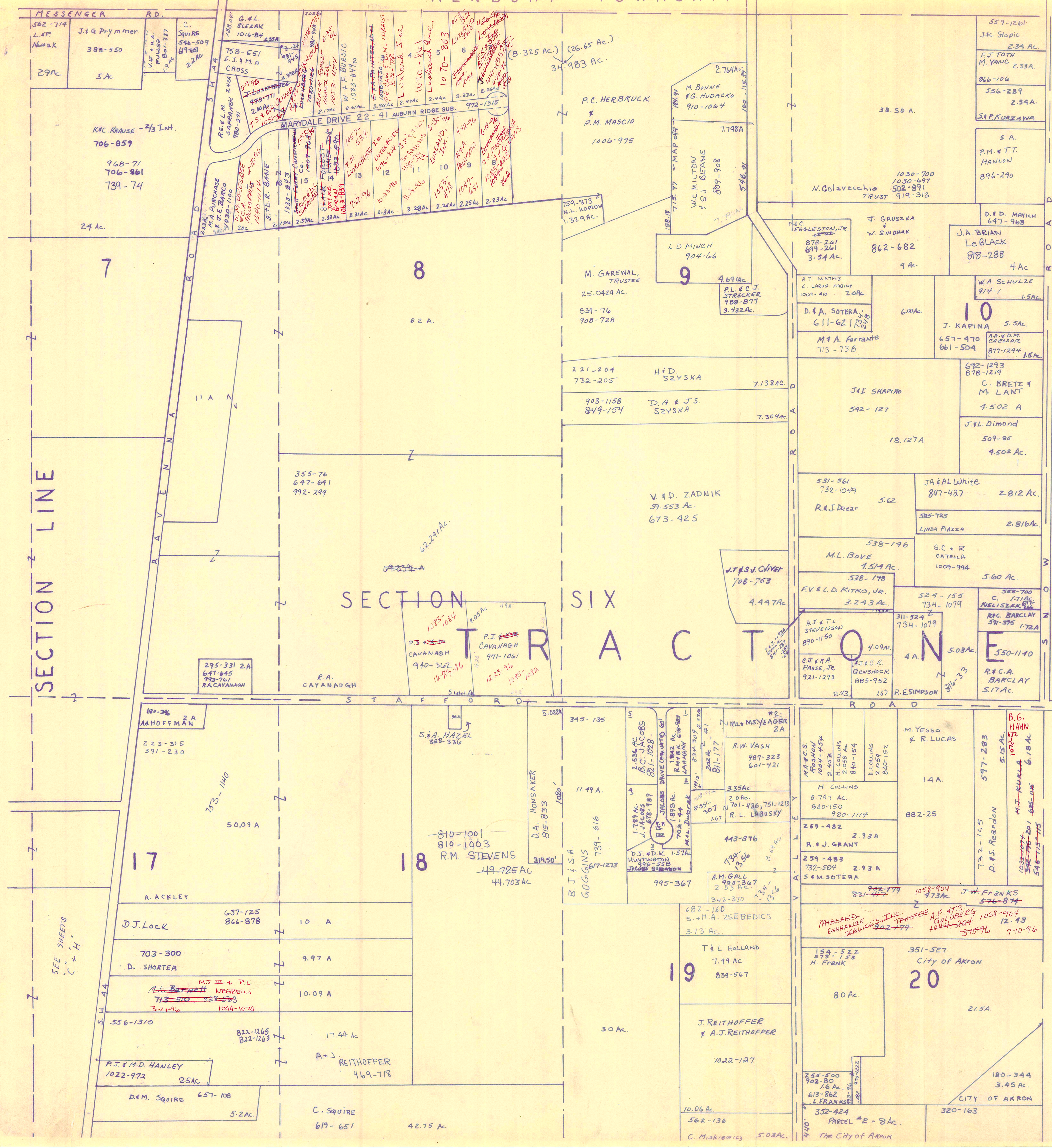


BAINBRIDGE TOWNSHIP

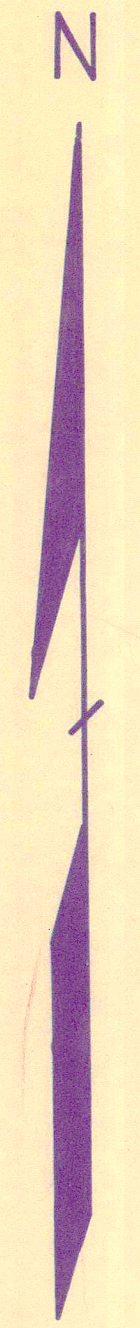


R.M. J. & S.C. BENEDICT
1074-443

Indicates survey on file in
tax map dept.
JAN 1, 1996
Auburn
"A"
RELATIVE AREA & NOTATION
* INADEQUATE
DESCRIPTION



T R O Y T O W N S H I P



SCALE 1" = 300'

JANUARY 1, 1996
RELATIVE REPRESENTATION

A	B	C	D
E	F	G	H
I	J	K	L
M	N	O	P

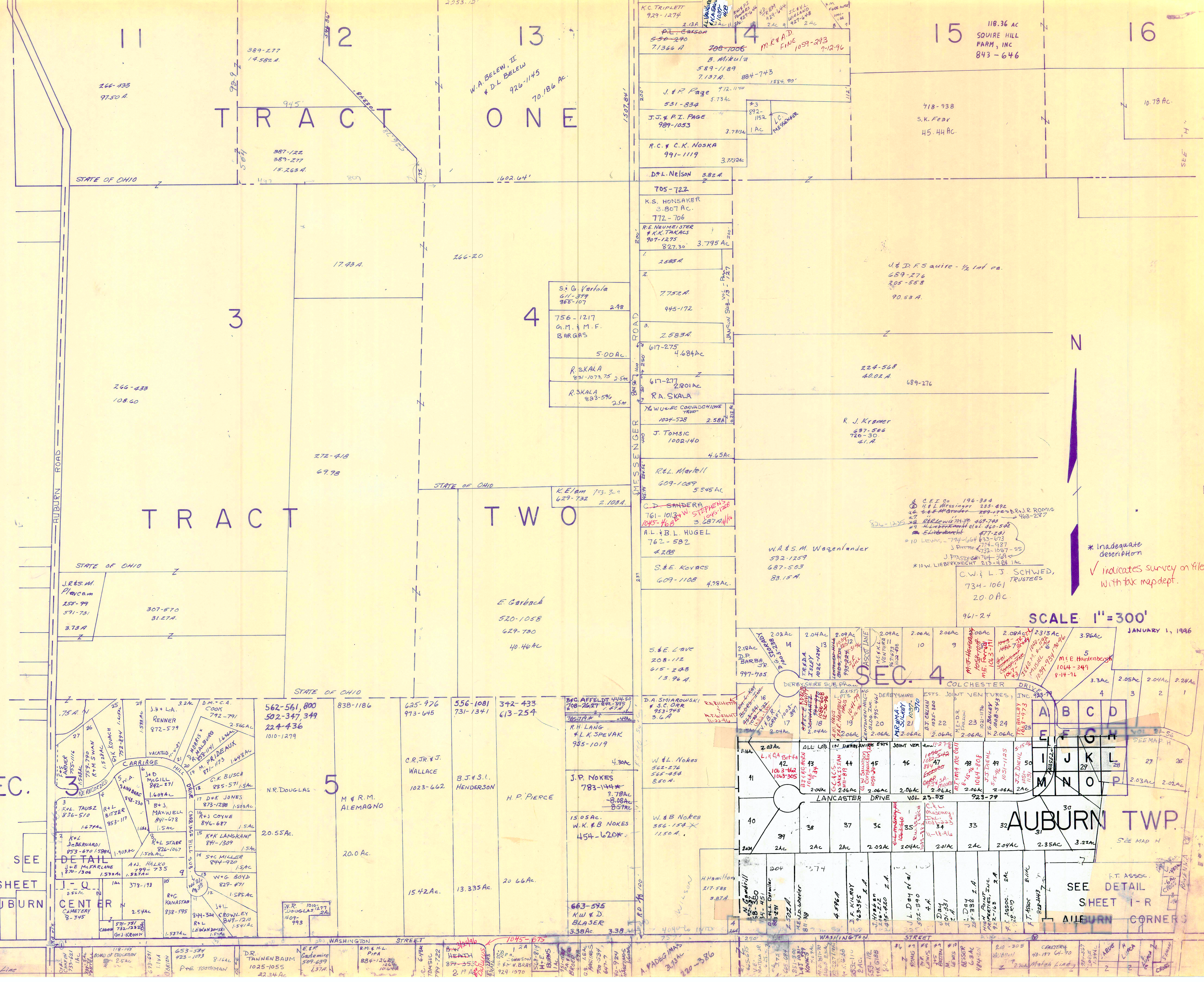
V indicates survey on file in tax map dept.

AUBURN TWP.

* Inadequate Description

SECTION LINE

SEE SHEETS "C" & "H"



TRACT ONE

TRACT TWO

SEC. 4

AUBURN TWP.

SEC. 3

SEE SHEET AUBURN

SEE DETAIL SHEET I-R

AUBURN CORNERS

SCALE 1" = 300'

JANUARY 1, 1946

* Inadequate description
✓ indicates survey on file with tax map dept.

STATE OF OHIO

STATE OF OHIO

STATE OF OHIO

STATE OF OHIO

SEE DETAIL

SEE DETAIL

Match Line

Match Line

266-435
97.50 A.

266-433
108.60

J.R. & M. Playcan
155-99
591-731
3.73 A.

J.E. TAUSZ
836-510
1.67 A.

J. & Q. CAMETARY
8-345

389-277
14.582 A.

387-122
389-277
15.263 A.

307-570
31.27 A.

J.N. & L.A. RENNER
872-579
2.56 A.

J. & L. DEBERNARDI
853-670
1.903 A.

R.C. KANASTAR
938-595

17.43 A.

272-418
69.98

562-561, 800
502-347, 349
224-436
1010-1279

20.55 A.

DR. TRAJNENBAUM
1025-1055
22.34 A.

226-20

K. Elam
103-300
629-732
2.108 A.

E. Garback
520-1058
629-730
40.46 A.

625-976
973-645

15.42 A.

E.P. GASTEMIRE
509-639
1.37 A.

W.A. BELEW, II
& D.L. BELEW
926-1145
70.186 A.

S. G. Vartola
611-379
866-107
2.98

756-1217
A.M. & M.F. BARGAS
5.00 A.

R. SKALA
831-1073, 75
2.58 A.

R. SKALA
833-596
2.58 A.

R. Elam
103-300
629-732
2.108 A.

E. Garback
520-1058
629-730
40.46 A.

556-1081
731-1341

20.66 A.

K.W. & D. BLASER
663-595
3.38 A.

K.C. TRIPLETT
929-1274
2.13 A.

D.L. NELSON
582 A.

K.S. HONSAKER
3.807 A.

R.E. NEUMEISTER
& K.K. TAKACS
907-1275
827.30

7752 A.

2.583 A.

617-275
4.684 A.

617-277
2.801 A.

R.A. SKALA
104-528
2.58 A.

J. TOMSIC
1002-140
4.65 A.

R.L. MARTELL
609-1059
5.545 A.

C.D. SANDER
761-1013
1045-468
3.687 A.

A.L. & B.L. HUGEL
762-582
4.288

S.E. KOVACS
609-1108
4.98 A.

5. & E. LAKE
208-112
615-248
13.96 A.

R.H. LANG
& L.K. SPEVAK
955-1019

J.P. NOKES
783-144
3.78 A.

15.05 A.

W.B. NOKES
556-154 X
11.50 A.

H. Hamilton
217-588
3.87 A.

P.L. CATSON
550-290
71366 A.

J. & P. PAGE
531-834
5.73 A.

J.J. & P.Z. PAGE
989-1053
3.783 A.

R.C. & C.K. NOSKA
991-1119
3.7732 A.

705-722

772-706

2583 A.

617-275
4.684 A.

617-277
2.801 A.

R.A. SKALA
104-528
2.58 A.

J. TOMSIC
1002-140
4.65 A.

R.L. MARTELL
609-1059
5.545 A.

C.D. SANDER
761-1013
1045-468
3.687 A.

A.L. & B.L. HUGEL
762-582
4.288

S.E. KOVACS
609-1108
4.98 A.

5. & E. LAKE
208-112
615-248
13.96 A.

R.H. LANG
& L.K. SPEVAK
955-1019

J.P. NOKES
783-144
3.78 A.

15.05 A.

W.B. NOKES
556-154 X
11.50 A.

H. Hamilton
217-588
3.87 A.

M.R. & A.D. FINE
1059-293
7-12-96

J. & P. PAGE
531-834
5.73 A.

J.J. & P.Z. PAGE
989-1053
3.783 A.

R.C. & C.K. NOSKA
991-1119
3.7732 A.

705-722

772-706

2583 A.

617-275
4.684 A.

617-277
2.801 A.

R.A. SKALA
104-528
2.58 A.

J. TOMSIC
1002-140
4.65 A.

R.L. MARTELL
609-1059
5.545 A.

C.D. SANDER
761-1013
1045-468
3.687 A.

A.L. & B.L. HUGEL
762-582
4.288

S.E. KOVACS
609-1108
4.98 A.

5. & E. LAKE
208-112
615-248
13.96 A.

R.H. LANG
& L.K. SPEVAK
955-1019

J.P. NOKES
783-144
3.78 A.

15.05 A.

W.B. NOKES
556-154 X
11.50 A.

H. Hamilton
217-588
3.87 A.

M.R. & A.D. FINE
1059-293
7-12-96

J. & P. PAGE
531-834
5.73 A.

J.J. & P.Z. PAGE
989-1053
3.783 A.

R.C. & C.K. NOSKA
991-1119
3.7732 A.

705-722

772-706

2583 A.

617-275
4.684 A.

617-277
2.801 A.

R.A. SKALA
104-528
2.58 A.

J. TOMSIC
1002-140
4.65 A.

R.L. MARTELL
609-1059
5.545 A.

C.D. SANDER
761-1013
1045-468
3.687 A.

A.L. & B.L. HUGEL
762-582
4.288

S.E. KOVACS
609-1108
4.98 A.

5. & E. LAKE
208-112
615-248
13.96 A.

R.H. LANG
& L.K. SPEVAK
955-1019

J.P. NOKES
783-144
3.78 A.

15.05 A.

W.B. NOKES
556-154 X
11.50 A.

H. Hamilton
217-588
3.87 A.

118.36 AC
SQUIRE HILL
FARM, INC
843-646

718-938
S.K. FEAR
45.44 AC.

J. & D. F. Squire - 1/2 Int. ea.
689-276
205-558
90.53 A.

224-568
40.02 A

R. J. Kramer
687-566
720-30
41 A.

W.A. & S.M. WAGENLANDER
532-1259
687-503
83.15 A.

C.W. & L.J. SCHWED,
TRUSTEES
734-1061
20.0 AC.

961-24

2.02 AC

2.04 AC

2.09 AC

2.06 AC

2.06 AC

2.06 AC

2.06 AC

10.78 AC.

4.65 AC.

4.65 AC.

4.65 AC.

4.65 AC.

4.65 AC.

4.65 AC.

4.65 AC.

4.65 AC.

4.65 AC.

4.65 AC.

4.65 AC.

4.65 AC.

4.65 AC.

10.78 AC.

4.65 AC.

4.65 AC.

4.65 AC.

4.65 AC.

4.65 AC.

4.65 AC.

4.65 AC.

4.65 AC.

4.65 AC.

4.65 AC.

4.65 AC.

4.65 AC.

4.65 AC.

SCALE 1" = 300'

JANUARY 1, 1946

SEC. 4

COLCHESTER

DRIVE

LANCASTER DRIVE VOL 25-85

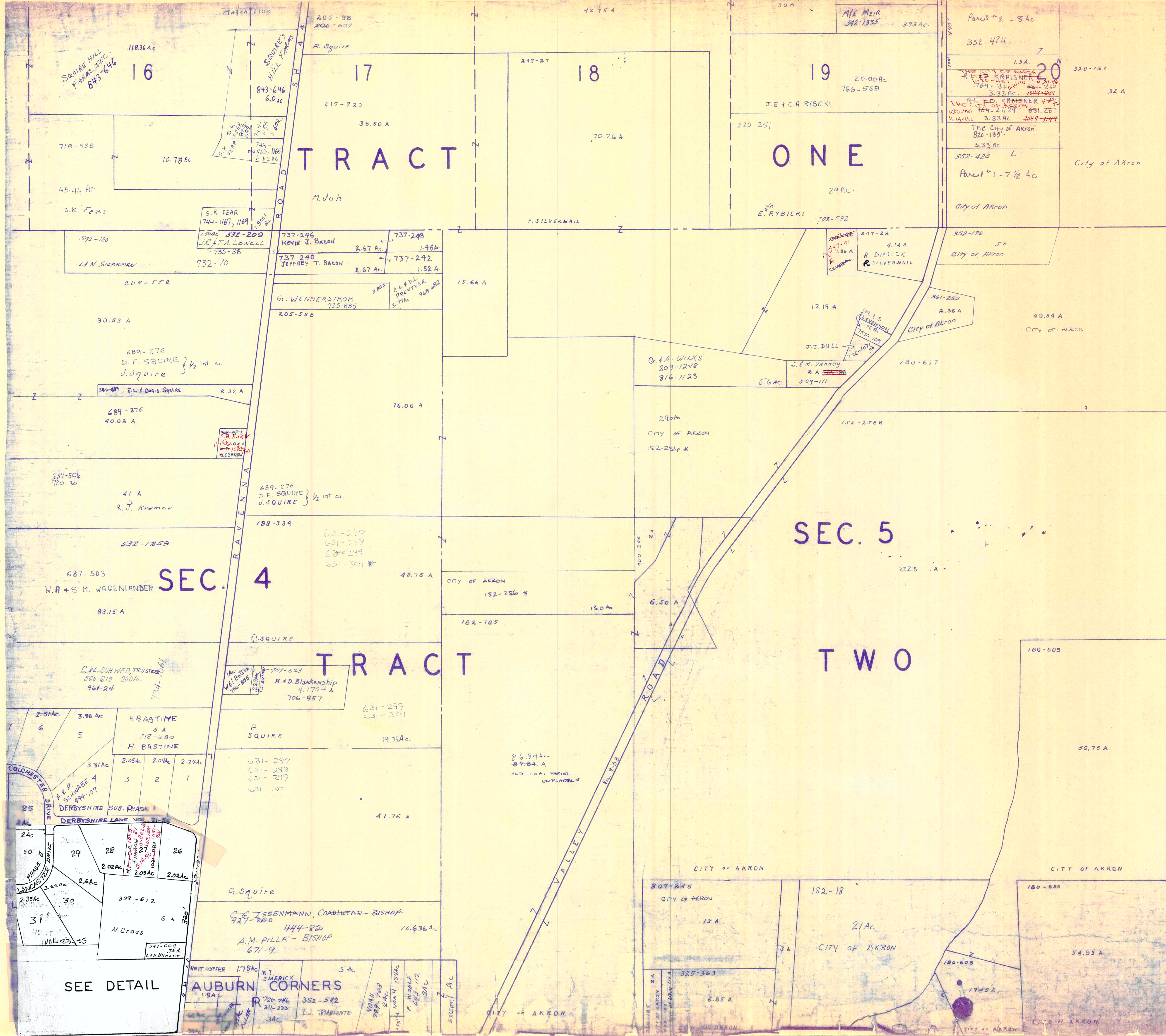
923-79

SEE DETAIL SHEET I-R

AUBURN CORNERS

SEE DETAIL SHEET I-R

AUBURN CORNERS



TROY TOWNSHIP



SCALE 1" = 300'

A	B	C	D
E	F	G	H
I	J	K	L
M	N	O	P

AUBURN TWP.

JANUARY 1, 1996
RELATIVE REPRESENTATION

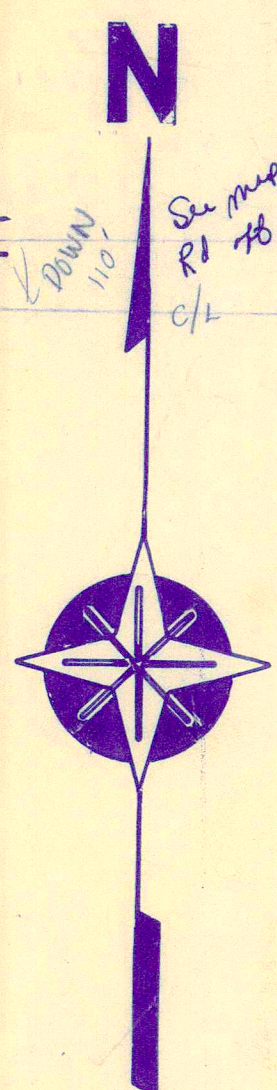
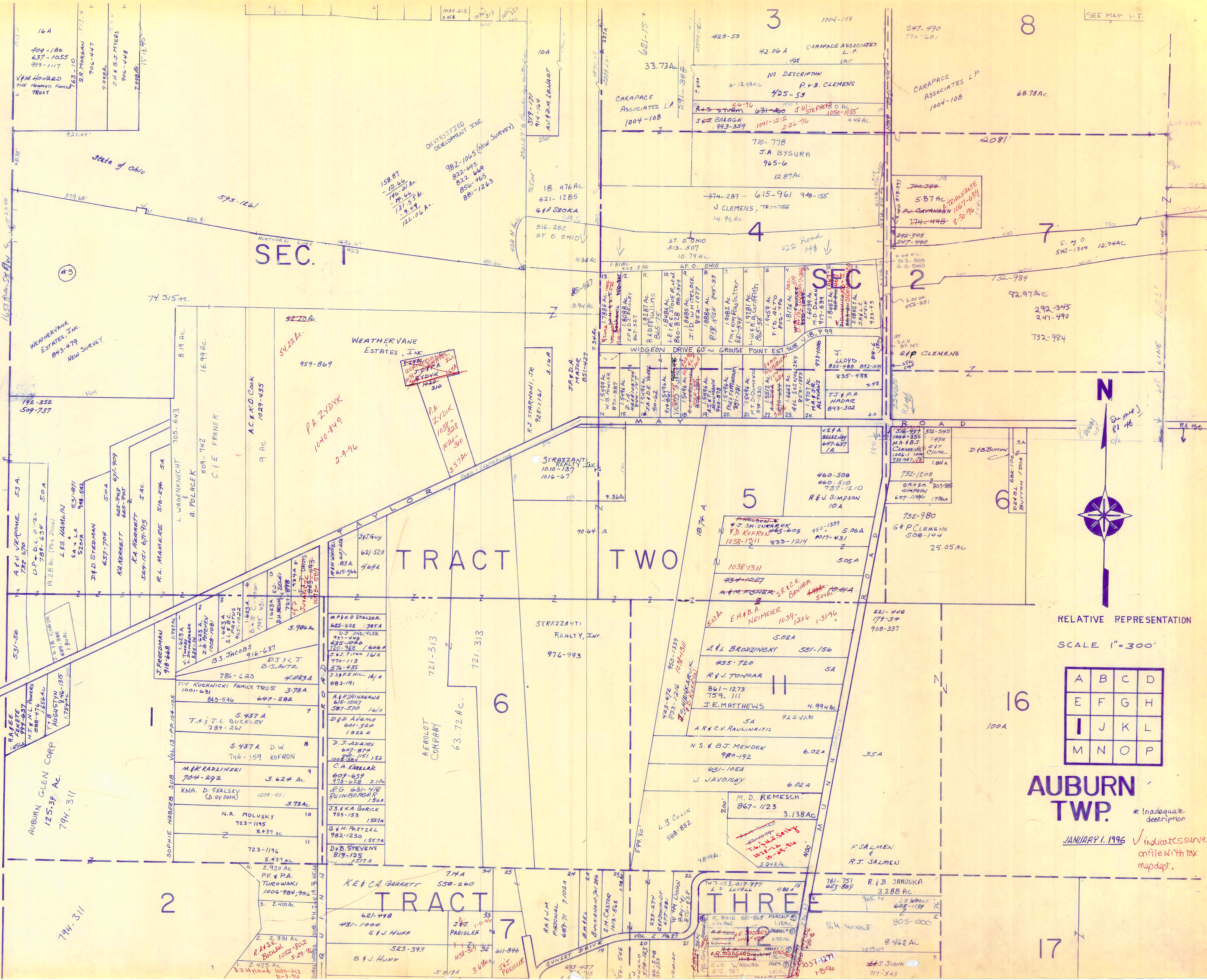
* Inadequate description
 ✓ indicates survey on file w/ dept.
 (181) 59AC-187-299 CITY OF AKRON

SEE DETAIL

AUBURN CORNERS

JAN 1, 1996

BAINBRIDGE TOWNSHIP



RELATIVE REPRESENTATION
SCALE 1"=300'

A	B	C	D
E	F	G	H
I	J	K	L
M	N	O	P

AUBURN TWP.

JANUARY 1, 1996
* Inadequate description
✓ indicates survey on file with tax mapdept.

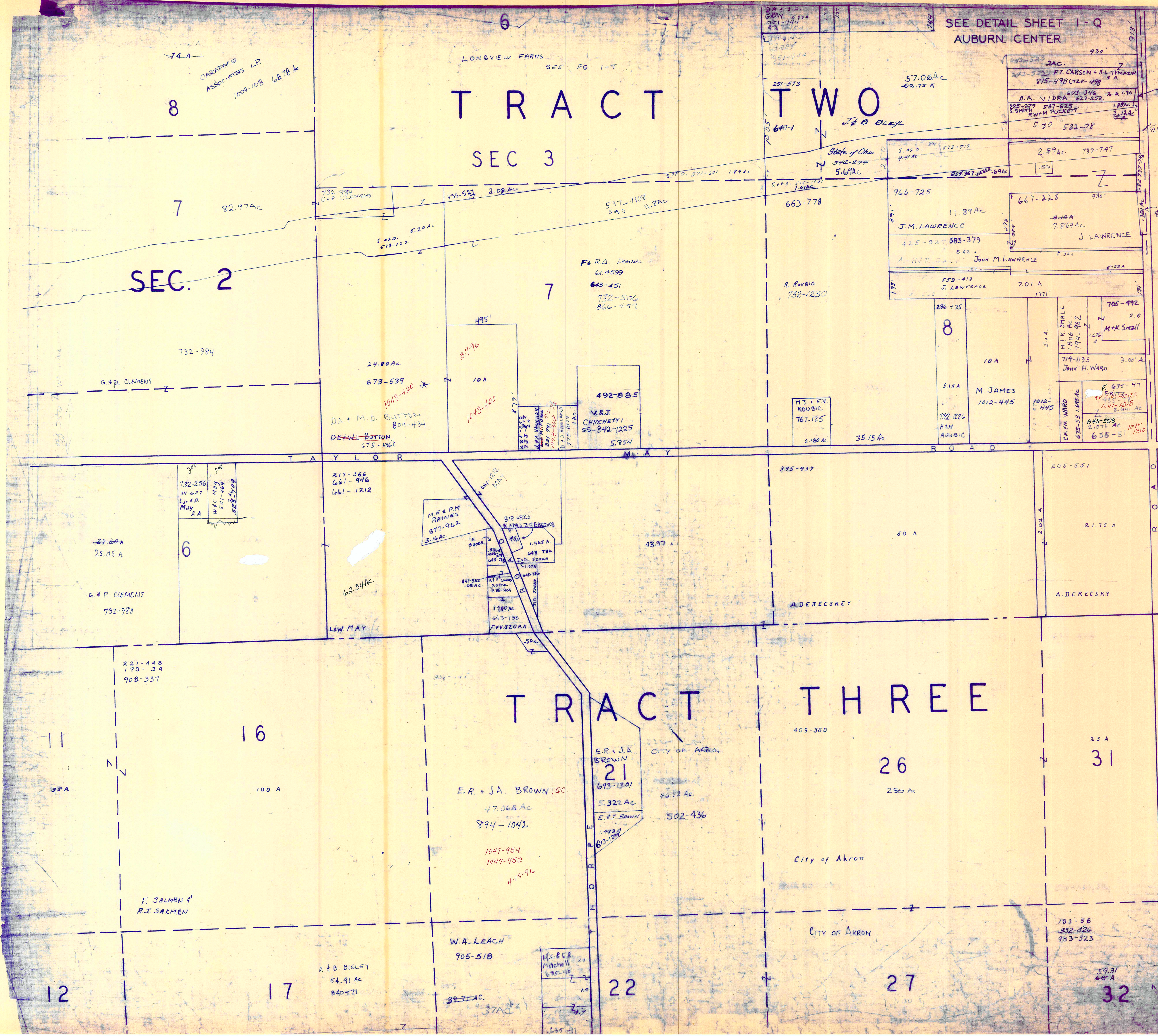
TRACT TWO

SEC 3

SEC. 2

TRACT THREE

SEE DETAIL SHEET I-Q
AUBURN CENTER



SCALE 1"=300'

A	B	C	D
E	F	G	H
I	J	K	L
M	N	O	P

JANUARY 1, 1996

AUBURN TWP.

RELATIVE REPRESENTATION

* Inadequate description

✓ indicates survey on file w/ tax map dept.

SEE DETAIL 1-TR
AUBURN CORNERS

SEE MAP "H"

180-607

180-639
CITY OF AKRON
355-124

180-608
17.45 AC
CITY OF AKRON

180-638
54.93 AC
CITY OF AKRON



TRACT TWO

CITY OF AKRON 127.50 AC

184-478
CITY OF AKRON 38 AC

SEC. 5

PA & DC
KOVALCHICK
783-926

20.25 AC

CITY OF AKRON
187-162

558-775 29.74 AC

48.94 AC

CITY OF AKRON 48.63 AC

IRENE HARDY
558-771
.52.26 AC

6 AC

49.00 AC
188-184
CITY OF AKRON

23.82 AC

184-482
35 AC
CITY OF AKRON

609-886
5.57 AC
J. & K.
EBERLY

7.25 AC
P. SCHMIDT
1023-1308

7.27 AC
736-838
ROBY J. & MICHELE A. PAVLIK

TRACT THREE

CITY OF AKRON
182-104

51

51.00 AC

182-106
56

CITY OF AKRON

100 AC

356-227
7.49 AC

9.08 AC

5028 AC
S.J. KOPRONY
957-1507
957-1279

5.77 AC
D.S. WILSON
957-1518
957-1290

61
7.50 AC
R.A. KOVACH
970-207

356-227
CITY OF AKRON
9.74 AC

5.75 AC
L.J. & B. DI CARRO
877-459

6.415 AC
L. & L.S. WALKER
1034-728

3.09 AC
M.L. & R.A.
DI CARRO
980-454

CITY OF AKRON
182-104

22.00 AC

5 AC
187-378
CITY OF AKRON

187-378
4 AC
CITY OF AKRON

105.50 AC

52

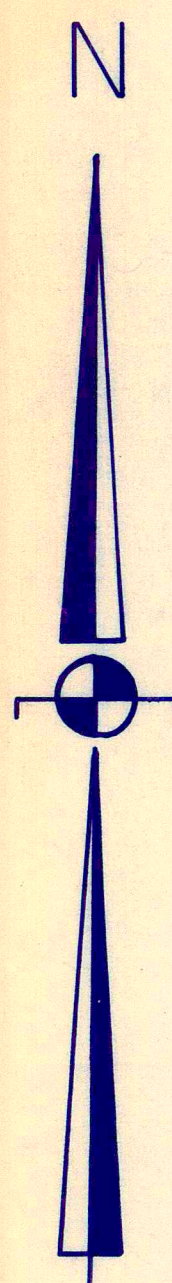
57

243.681 AC

62

445-1000
P.R. GREITZER

TROY TOWNSHIP



indicates survey on file with tax map dept.
*Inadequate Description

SCALE: 1" = 300'

A	B	C	D
E	F	G	H
I	J	K	L
M	N	O	P

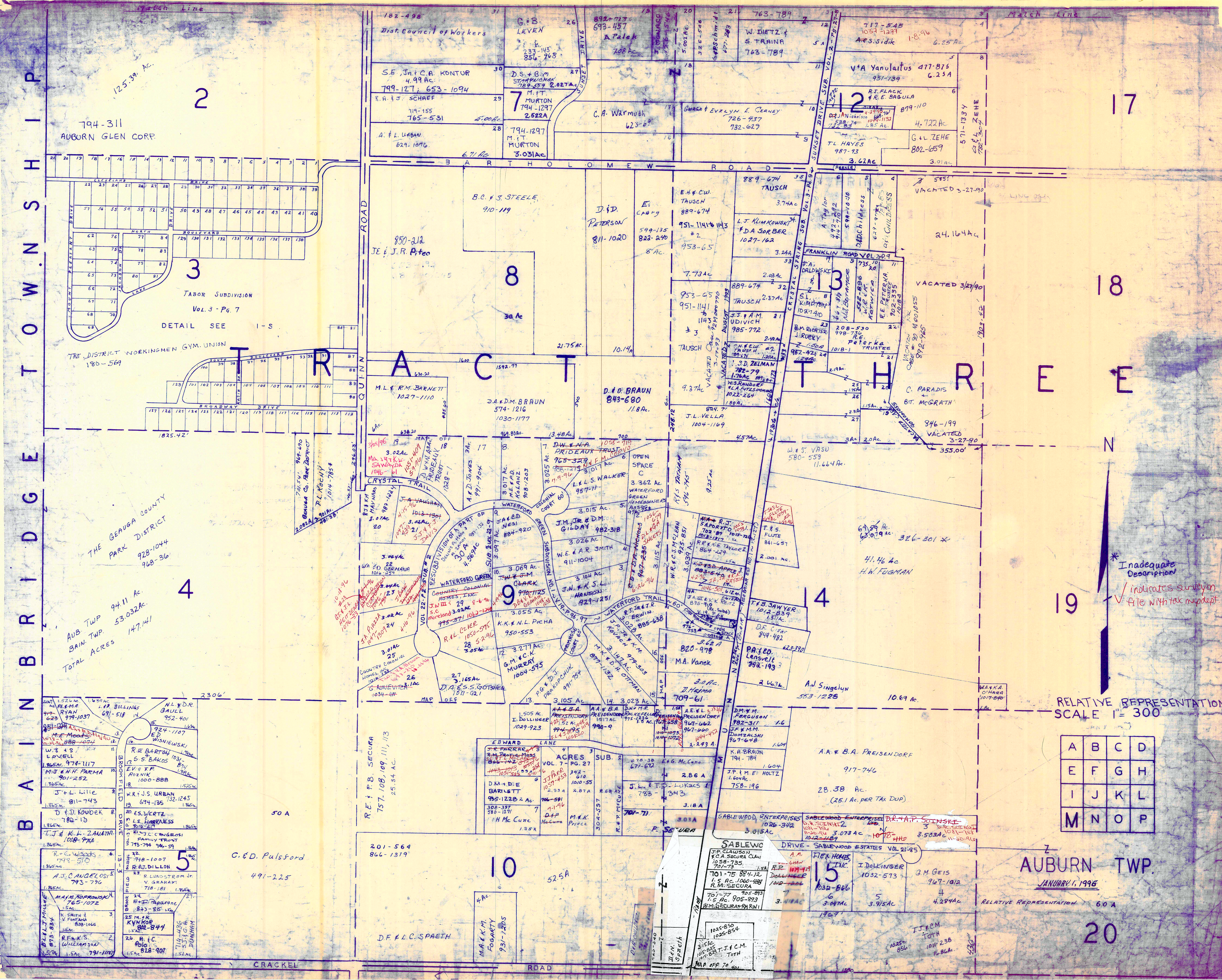
AUBURN TOWNSHIP

JANUARY 1, 1996

RELATIVE REPRESENTATION

MATCH LINE

THE LANDINGS IN VOL 13-78-86



B A I N B R I D G E T O W N S H I P

794-311
AUBURN GLEN CORP.

TABOR SUBDIVISION
Vol. 3 - Pg. 7
DETAIL SEE I-S

THE DISTRICT WORKINGMEN GYM. UNION
180-569

THE BEAUGA COUNTY
PARK DISTRICT
928-1044
928-306

AUB. TWP. 94.11 AC.
BAIN TWP. 53.032 AC.
TOTAL ACRES 147.141

1. 1.52 AC. N.L. & D.R. GAULL 952-401
2. 1.74 AC. ED. WISNIEWSKI
3. 1.74 AC. RIE BARTON 1031 874
4. 1.74 AC. S.S. BAKOS 874 874
5. 1.74 AC. EV. & F.F. ROZNIK 1000-888
6. 1.74 AC. W.R. & J.S. URBAN 732-1245
7. 1.74 AC. D. & J. KOUDER 782-13
8. 1.74 AC. T.J. & K.L. ZANATHI 1018-974
9. 1.74 AC. R. & C. WOODS 715-510
10. 1.74 AC. A.J. CANGELOSI 793-796
11. 1.74 AC. M.A. & J. KOPROWSKI 765-1072
12. 1.74 AC. R. & S. SMITH 808-1066
13. 1.74 AC. R. & K.S. WILLIAMSON 791-1070
14. 1.74 AC. D.L. MILLER 873-834
15. 1.74 AC. V. FONTANA 808-1066
16. 1.74 AC. R. & K.S. WILLIAMSON 791-1070
17. 1.74 AC. D.L. MILLER 873-834
18. 1.74 AC. V. FONTANA 808-1066
19. 1.74 AC. R. & K.S. WILLIAMSON 791-1070
20. 1.74 AC. D.L. MILLER 873-834
21. 1.74 AC. V. FONTANA 808-1066
22. 1.74 AC. R. & K.S. WILLIAMSON 791-1070
23. 1.74 AC. D.L. MILLER 873-834
24. 1.74 AC. V. FONTANA 808-1066
25. 1.74 AC. R. & K.S. WILLIAMSON 791-1070
26. 1.74 AC. D.L. MILLER 873-834
27. 1.74 AC. V. FONTANA 808-1066
28. 1.74 AC. R. & K.S. WILLIAMSON 791-1070
29. 1.74 AC. D.L. MILLER 873-834
30. 1.74 AC. V. FONTANA 808-1066
31. 1.74 AC. R. & K.S. WILLIAMSON 791-1070
32. 1.74 AC. D.L. MILLER 873-834
33. 1.74 AC. V. FONTANA 808-1066
34. 1.74 AC. R. & K.S. WILLIAMSON 791-1070
35. 1.74 AC. D.L. MILLER 873-834
36. 1.74 AC. V. FONTANA 808-1066
37. 1.74 AC. R. & K.S. WILLIAMSON 791-1070
38. 1.74 AC. D.L. MILLER 873-834
39. 1.74 AC. V. FONTANA 808-1066
40. 1.74 AC. R. & K.S. WILLIAMSON 791-1070
41. 1.74 AC. D.L. MILLER 873-834
42. 1.74 AC. V. FONTANA 808-1066
43. 1.74 AC. R. & K.S. WILLIAMSON 791-1070
44. 1.74 AC. D.L. MILLER 873-834
45. 1.74 AC. V. FONTANA 808-1066
46. 1.74 AC. R. & K.S. WILLIAMSON 791-1070
47. 1.74 AC. D.L. MILLER 873-834
48. 1.74 AC. V. FONTANA 808-1066
49. 1.74 AC. R. & K.S. WILLIAMSON 791-1070
50. 1.74 AC. D.L. MILLER 873-834
51. 1.74 AC. V. FONTANA 808-1066
52. 1.74 AC. R. & K.S. WILLIAMSON 791-1070
53. 1.74 AC. D.L. MILLER 873-834
54. 1.74 AC. V. FONTANA 808-1066
55. 1.74 AC. R. & K.S. WILLIAMSON 791-1070
56. 1.74 AC. D.L. MILLER 873-834
57. 1.74 AC. V. FONTANA 808-1066
58. 1.74 AC. R. & K.S. WILLIAMSON 791-1070
59. 1.74 AC. D.L. MILLER 873-834
60. 1.74 AC. V. FONTANA 808-1066
61. 1.74 AC. R. & K.S. WILLIAMSON 791-1070
62. 1.74 AC. D.L. MILLER 873-834
63. 1.74 AC. V. FONTANA 808-1066
64. 1.74 AC. R. & K.S. WILLIAMSON 791-1070
65. 1.74 AC. D.L. MILLER 873-834
66. 1.74 AC. V. FONTANA 808-1066
67. 1.74 AC. R. & K.S. WILLIAMSON 791-1070
68. 1.74 AC. D.L. MILLER 873-834
69. 1.74 AC. V. FONTANA 808-1066
70. 1.74 AC. R. & K.S. WILLIAMSON 791-1070
71. 1.74 AC. D.L. MILLER 873-834
72. 1.74 AC. V. FONTANA 808-1066
73. 1.74 AC. R. & K.S. WILLIAMSON 791-1070
74. 1.74 AC. D.L. MILLER 873-834
75. 1.74 AC. V. FONTANA 808-1066
76. 1.74 AC. R. & K.S. WILLIAMSON 791-1070
77. 1.74 AC. D.L. MILLER 873-834
78. 1.74 AC. V. FONTANA 808-1066
79. 1.74 AC. R. & K.S. WILLIAMSON 791-1070
80. 1.74 AC. D.L. MILLER 873-834
81. 1.74 AC. V. FONTANA 808-1066
82. 1.74 AC. R. & K.S. WILLIAMSON 791-1070
83. 1.74 AC. D.L. MILLER 873-834
84. 1.74 AC. V. FONTANA 808-1066
85. 1.74 AC. R. & K.S. WILLIAMSON 791-1070
86. 1.74 AC. D.L. MILLER 873-834
87. 1.74 AC. V. FONTANA 808-1066
88. 1.74 AC. R. & K.S. WILLIAMSON 791-1070
89. 1.74 AC. D.L. MILLER 873-834
90. 1.74 AC. V. FONTANA 808-1066
91. 1.74 AC. R. & K.S. WILLIAMSON 791-1070
92. 1.74 AC. D.L. MILLER 873-834
93. 1.74 AC. V. FONTANA 808-1066
94. 1.74 AC. R. & K.S. WILLIAMSON 791-1070
95. 1.74 AC. D.L. MILLER 873-834
96. 1.74 AC. V. FONTANA 808-1066
97. 1.74 AC. R. & K.S. WILLIAMSON 791-1070
98. 1.74 AC. D.L. MILLER 873-834
99. 1.74 AC. V. FONTANA 808-1066
100. 1.74 AC. R. & K.S. WILLIAMSON 791-1070

C.E.D. Pulsford
491-225

201-564
866-1319

4.4 AC.
M.A. & K.M. FOGARTY
931-1205

D.F. & L.C. SPAETH

AUBURN TWP.
JANUARY 1, 1996

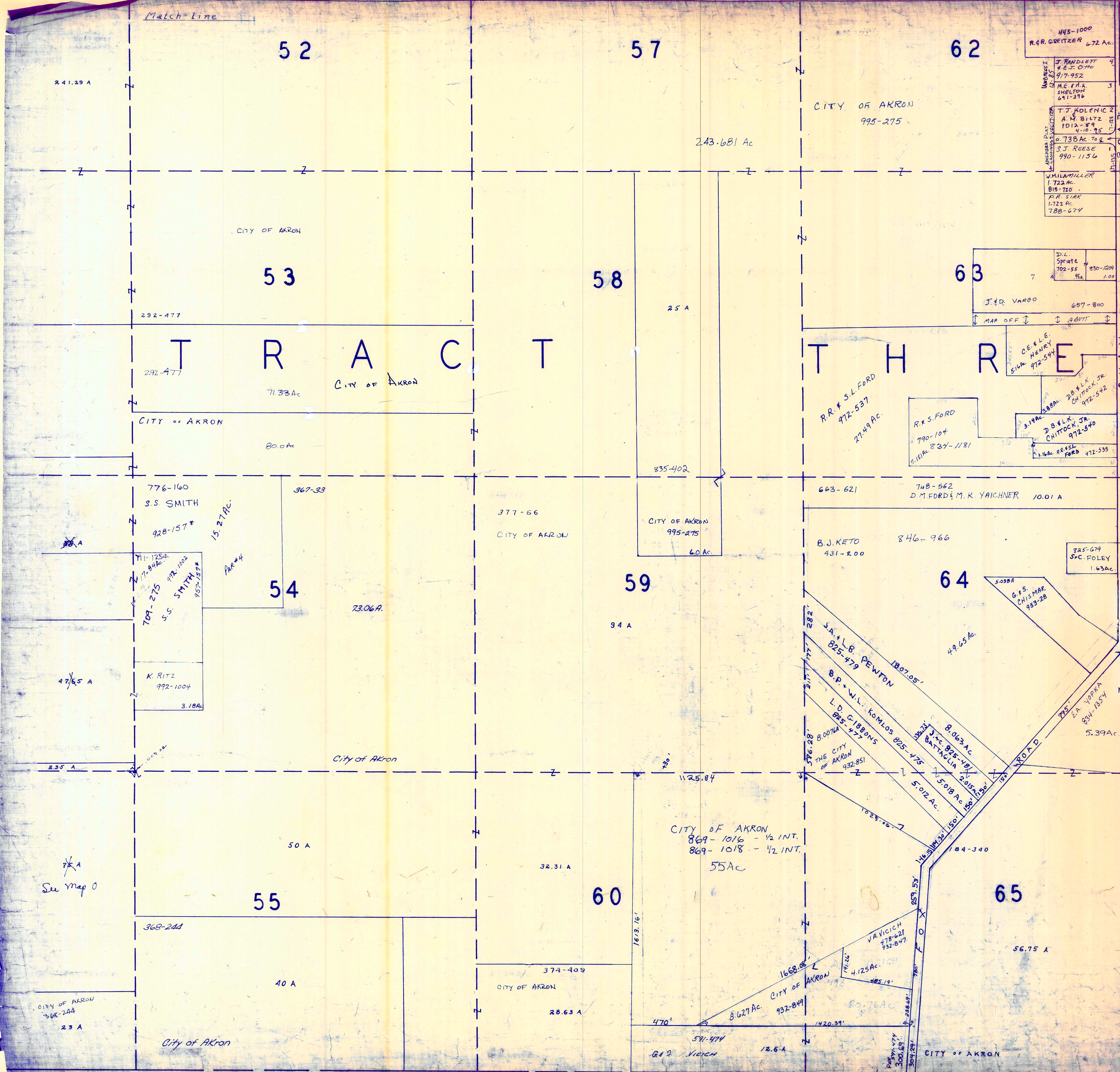
RELATIVE REPRESENTATION 60 A

A	B	C	D
E	F	G	H
I	J	K	L
M	N	O	P

20

* Inadequate Description
/ indicates survey on file with tax assessor

RELATIVE REPRESENTATION SCALE 1" = 300'



T O W N S H I P

T R O Y

A U B U R N T W P.

RELATIVE REPRESENTATION

SCALE 1" = 300'

JANUARY 1, 1996

A	B	C	D
E	F	G	H
I	J	K	L
M	N	O	P

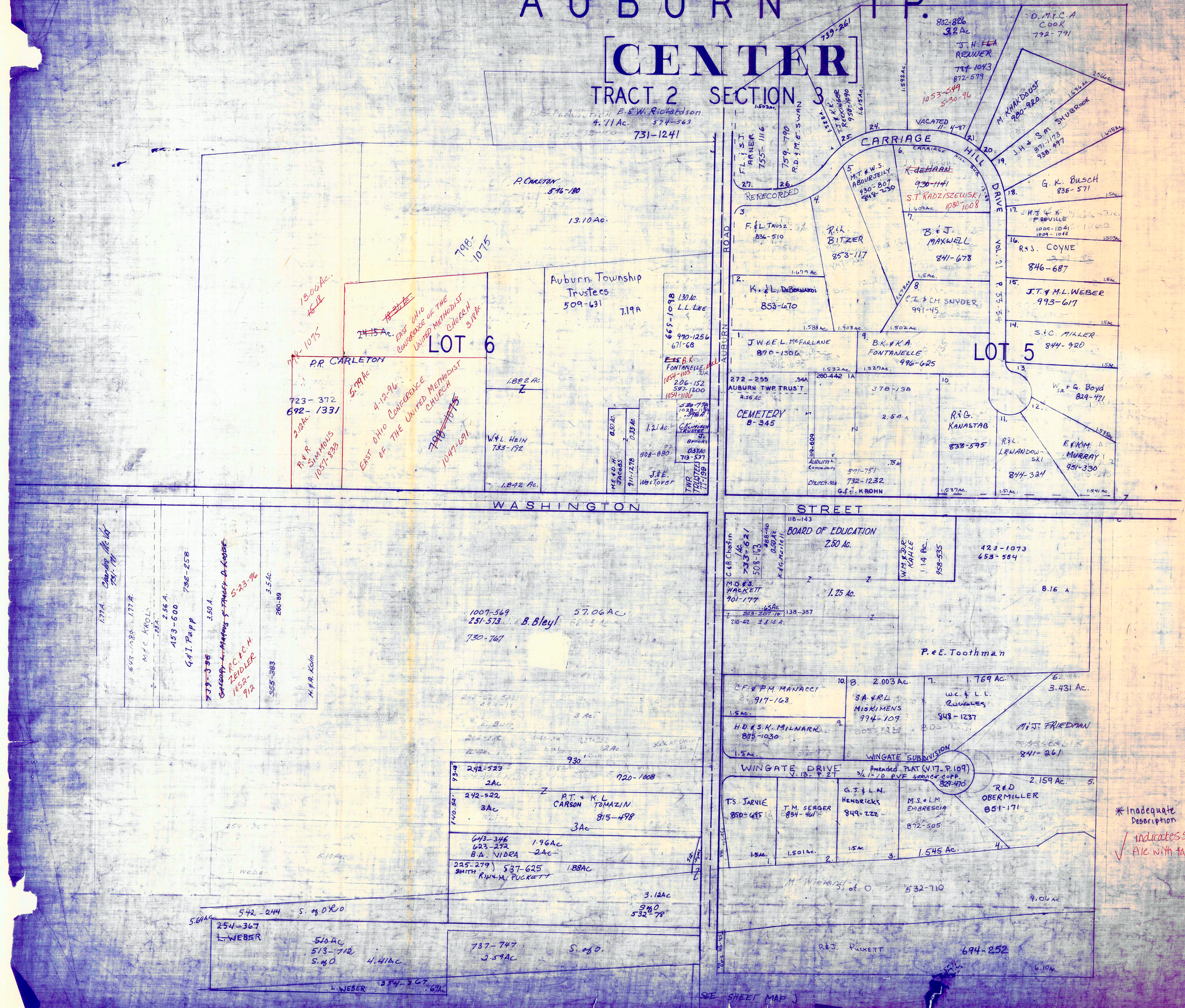
* Inadequate Description
✓ Indicates survey on file with tax map dept.

Connecting Owners name of 60' Strip:
L. & O. Dev. Co. 835-401

AUBURN TP

CENTER

TRACT 2 SECTION 3



RELATIVE REPRESENTATION

JANUARY 1, 1996

SCALE 1 in. = 2.5 ch. = 165 ft.

* Inadequate Description
✓ indicates survey on file with tax map dept.

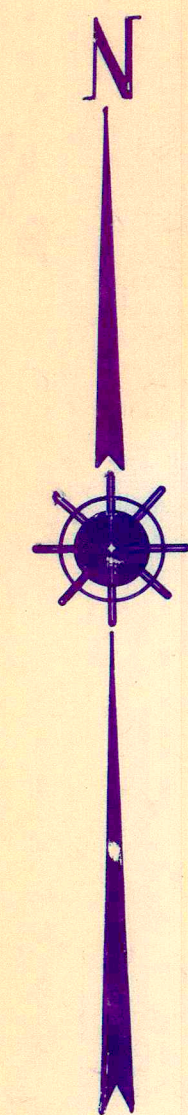
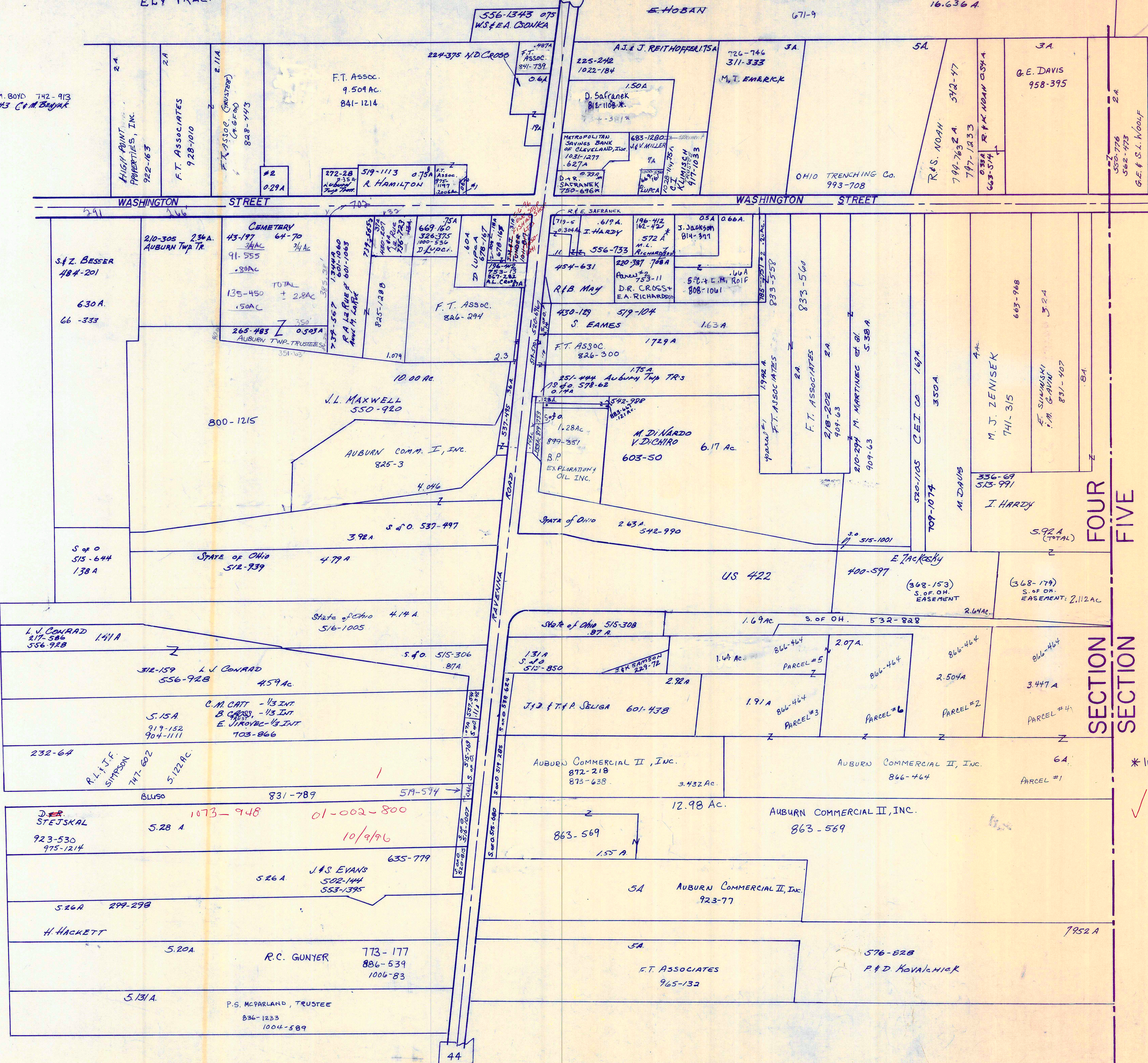
SEE SHEET MAP J

TRACT 2
SECTION 4
ELY TRACT

AUBURN TP.

AUBURN CORNERS
& VICINITY

#1
#2 J.G. & K.M. BOYD 742-913
#3 373-543 C.M. BRYAN



Scale 1" = 2.5 ch. = 165 ft.

JANUARY 6, 1996

RELATIVE REPRESENTATION

SECTION FOUR
SECTION FIVE

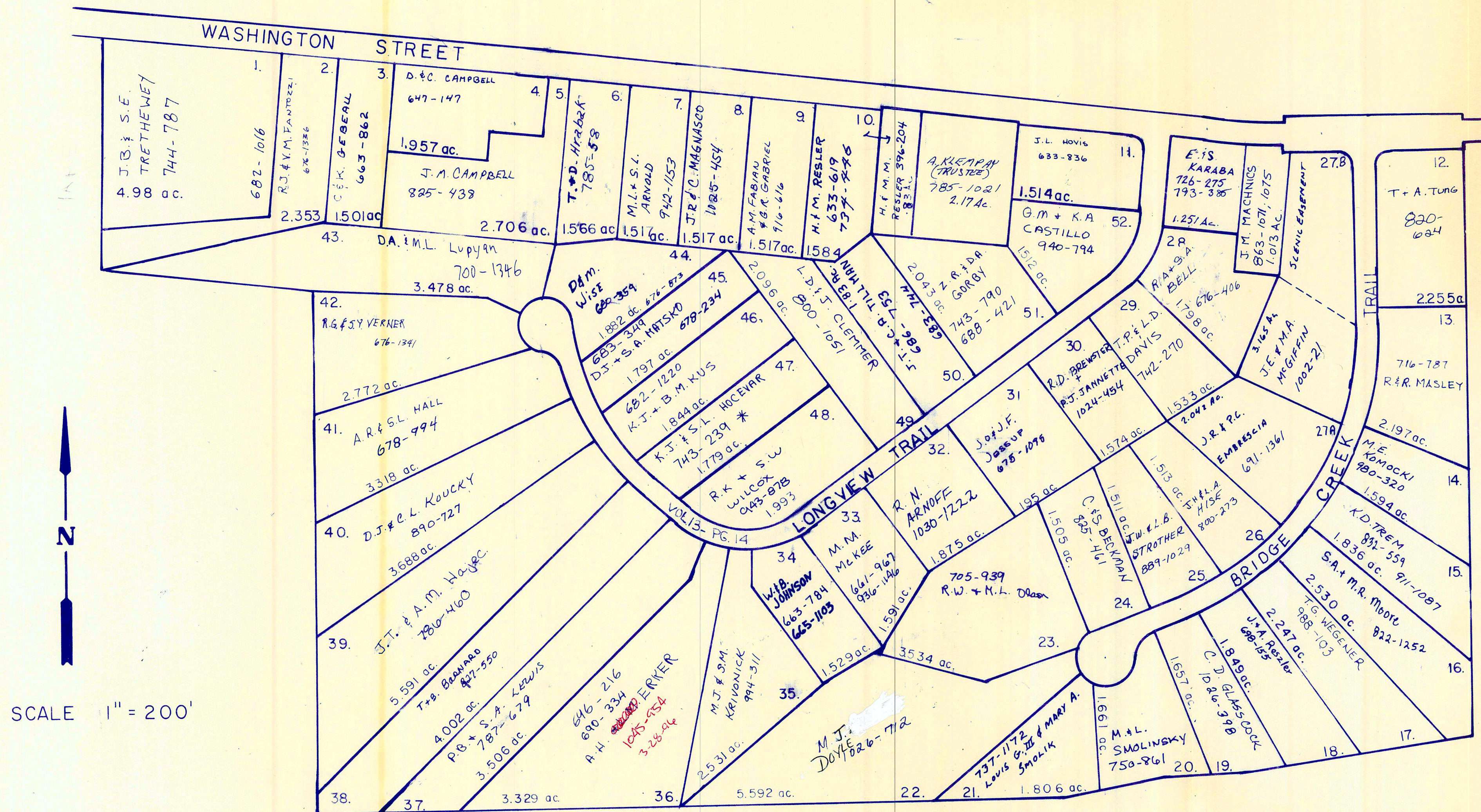
* Inadequate Description
✓ indicates survey on file with tax map dept.

I-R

AUBURN

OL. 8 SEC. 2

OL. 6 SEC. 3 TRACT 2



S/L 27 RESUB VOL. 14-PG. 50

LONGVIEW FARMS 1 & 2

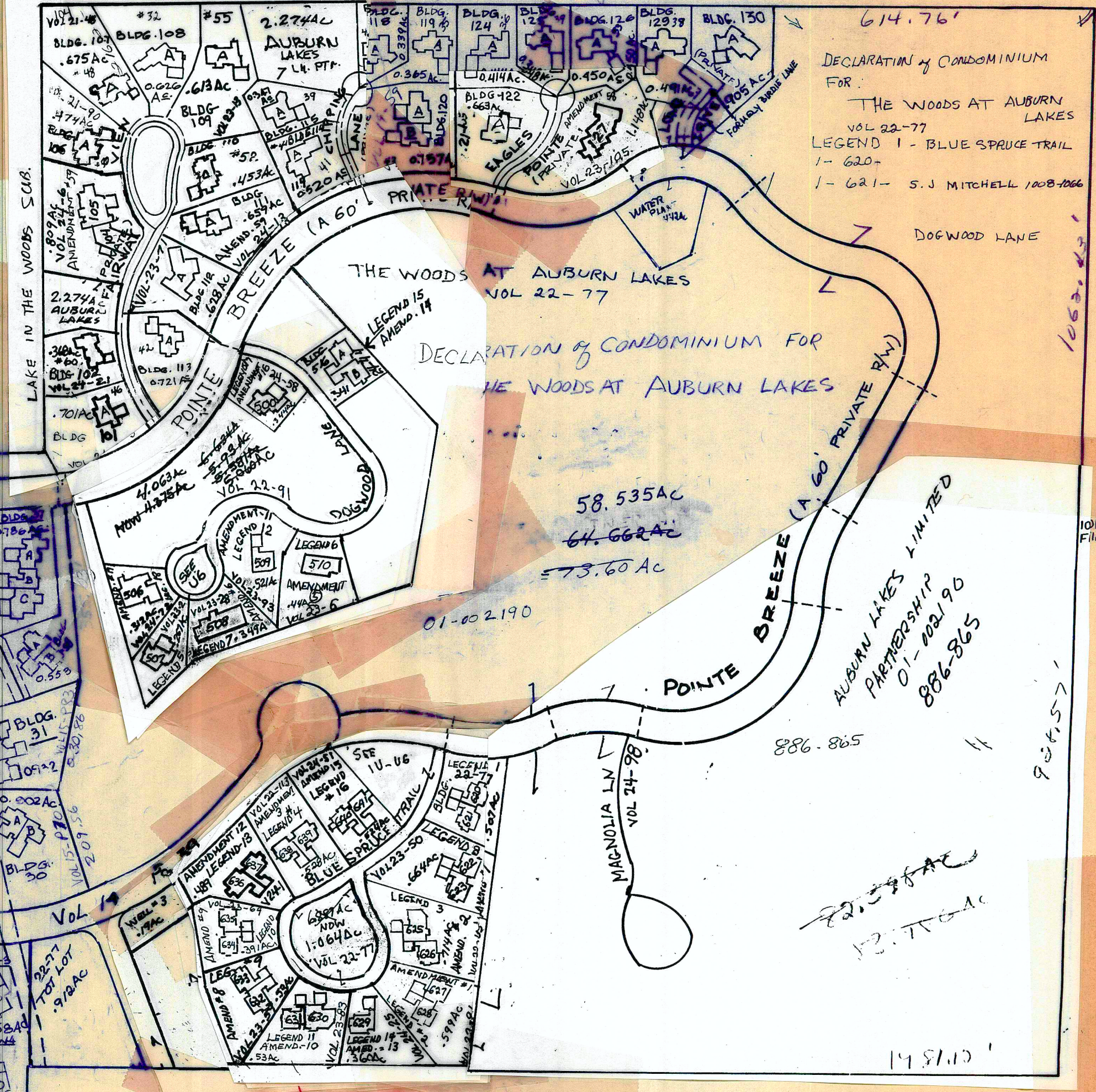
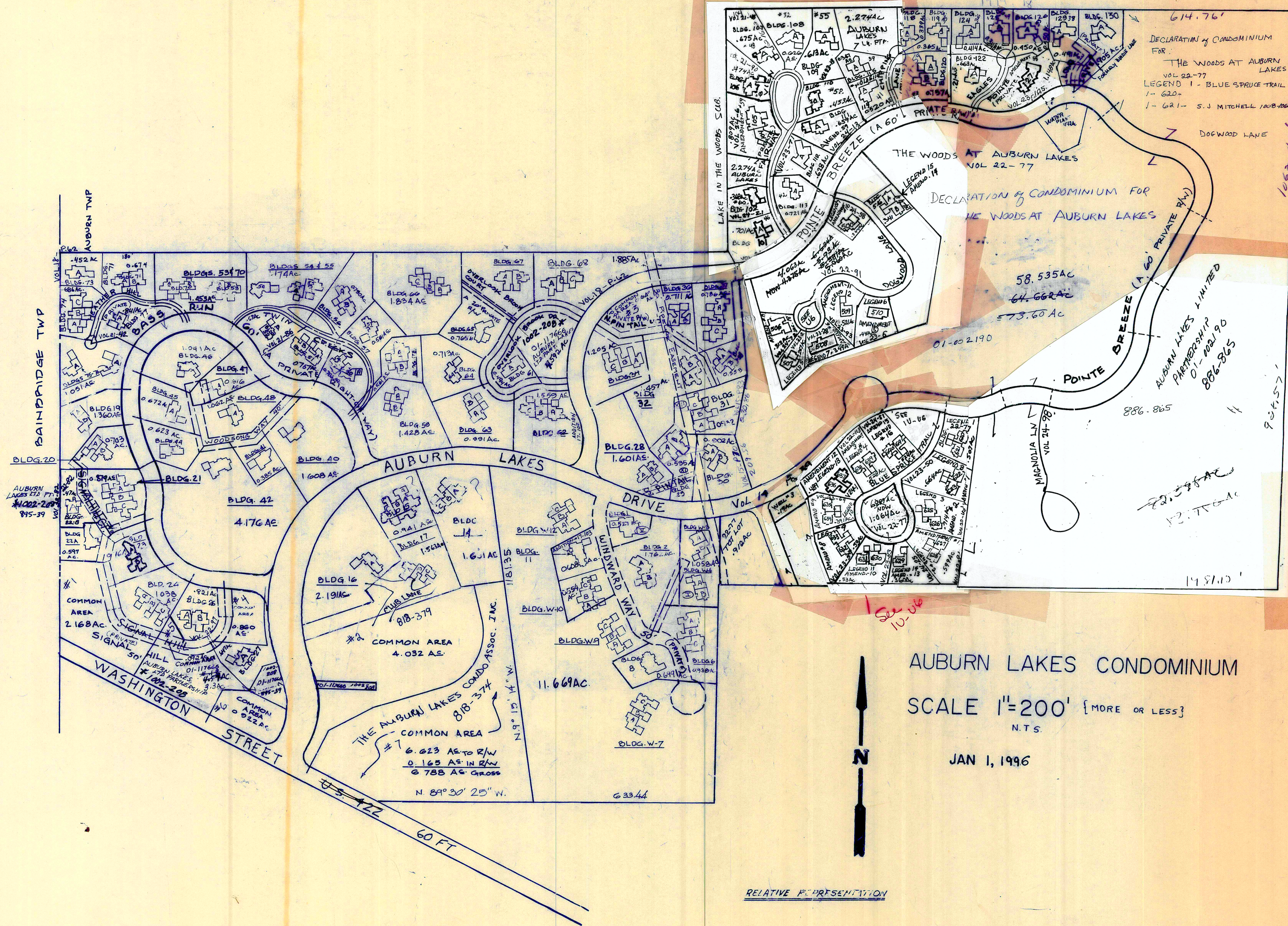
VOL. 12 PP. 62-64

VOL. 13 PP. 13-16

JANUARY 1, 1996
RELATIVE REPRESENTATION

* Inadequate Description
✓ indicates survey on file with tax map dept.

LAND IN THE WOODS SUBDIVISION VOL. 11 P. 33



AUBURN LAKES CONDOMINIUM

SCALE 1"=200' [MORE OR LESS]
N.T.S.

JAN 1, 1996

RELATIVE REPRESENTATION

* INADEQUATE DESCRIPTION
✓ indicates survey on file with
tax map dept.

BLDG/UNIT	TRANSFERRED TO	VOL	PG	TRANSFERRED TO	VOL	PG	TRANSFERRED TO	VOL	PG	TRANSFERRED TO	VOL	PG
BLDG W-1 A-66	(WINDWARD WAY) M. & N. LAVIN	15	1	N. L. LAVIN	1035	1120						
BLDG W-2 A-64 B-62	(WINDWARD WAY) P. & A. BRICKENDEN W. J. EDWARDS	17 819 980	4758 67 1137	H. M. HAMMER	1013	789						
BLDG W-3 A-54 B-52	(WINDWARD WAY) A. D. O'HAYIO W. J. RINI	14 815 708	110-115 1040 427									
BLDG W-4 A-50 B-48	(WINDWARD WAY) D. DOLCH G. E. KING, TRUSTEE	14 718 979	110-115 1127 310									
BLDG W-5												
BLDG W-6 A-46 B-44 C-42	(WINDWARD WAY) D. & J. MATZ W. L. RISIUS, TRUST W. & T. MASTERS	15 718 1035 809	1 203 1282 405	I. BYRNES T. A. MASTERS	1074 1014	616 9						
BLDG W-7 A-40 B-38 C-36	(WINDWARD WAY) M. A. BERG H. EPPRECHT C. HOLYLAND	14 823 700 714	72 949 1300 720	A. C. HERNDON	7-25-94 989	127						
BLDG W-8 A-34 B-32	(WINDWARD WAY) D. F. LEDERER	14 922	130-136 1137	B. & D. LEDERER	5-17-96 1052	83						
BLDG W-9 A-30 B-28 C-26	(WINDWARD WAY) E. H. DOLAN B. DEUTSCH B. H. WARNER	14 947 919 881	72 211 67 980									
BLDG W-10 A-24 B-22 C-20	(WINDWARD WAY) G. C. HERMAN K. & D. WERNER H. EPPRECHT	14 861 707 867	110-115 970 1185 293									
BLDG W-11 A-16	(WINDWARD WAY) LAKESIDE ESTATE SERVICES	14 921	130-136 1137 1182	DAVID L. DALEY	1036	1091	L. J. & E. H. DOLAN	1036	1093			
BLDG W-12 A-14 B-12 C-10	(WINDWARD WAY) B. A. IRWIN C. L. DOBBS, TRUSTEE S. M. & C. T. QUA	14 941 887 727	72 1309 910 160	R. A. MINTZ	1027	903						
BLDG 13												
BLDG 14 A-68 B-70 C-72	COVE COVE C. J. & A. D. MCBRIDE THOMAS & GLORIA CAVES DONALD & DORIS WISE	15 749 729 730	48-52 652 1230 944	A. D. MCBRIDE	1045	1044						
BLDG 15 A-74 B-76 C-78	(COVE COURT) T. D. & D. R. CLARK T. & B. PORTER M. LIDGEY	15 765 826 844-378	17 634 333 868	M. G. & A. E. GRIFFITH	1034	721						
BLDG 16 A-80	(CLUB LANE) R. L. & R. MINTZ	15 755	117-127 792									
BLDG 17 A-84 B-86 C-88	(CLUB LANE) N. & A. SCHWARTZ D. H. DIETZ, JR. H. T. FAY	15 856 940 748	91 327 265 810	A. H. SCHWARTZ	1028	181						
BLDG 18												
BLDG 19 A-92 B-94	SIGNAL HILL J. A. ROGERS J. W. & K. J. LASEY	15 945 934	27 654 383									
BLDG 20 A-96 B-98	SIGNAL HILL MARK & NANCY MILLS R. G. ROBERTS	14 729 716	141-144 881 97									
BLDG 21 A-100 B-102 C-104	(SIGNAL HILL) J. R. & E. LAHN CHICAGO TITLE, TRUSTEE B. W. & E. P. HOLMES	15 879 944 907	21 641 1331 1149	J. A. & M. FERRANTE B. O. BAUMGARTNER	1067 995	699 594						
BLDG 22 A-110 B-	(SIGNAL HILL) COURT RICHARD J. & KATHRYN A. MANFREDI B. E. FETTERMAN	15 740 1008-1019	70 44 22									
BLDG 23 A-112 B-114	(SIGNAL HILL) T. D. EVANS A. S. FOX, TRUSTEE	15 749 820 929	91 865 1226 1110									
BLDG 24 A-116 B-118 C-120	(SIGNAL HILL) R. J. KICHLER R. A. GREEN J. SMITH	16 801 782 817	29-34 1287 396 747	R. S. STONE J. P. & P. J. SMITH	1031 1016	1227 1053	RA. CLASEN	1016	1055			
BLDG 25												
BLDG 26 A-130 B-132	(SIGNAL HILL) J. R. PEKAREK AMERI-CON AUBURN, Inc	22 1026 1017	97 355 816	B. T. ALBRECHT	1017	818						
BLDG 27 A-136	(SIGNAL HILL) A. G. & L. L. SCHURING	20 942	115-118 693									
BLDG 28 A-138 B-140	(SOUTH PINTAIL) P. & R. KYSELA H. B. & S. D. MARX, TRUSTEES	15 834 897	56 645 1252	R. F. KYSELA	987	448						
BLDG 29 A-142 B-144	(SOUTH PINTAIL) J. J. & Z. L. LIPTAK R. E. & P. H. FRUIT	15 736 817	60 427 443	M. J. & J. N. DEHAEMER	1070	950						

BLDG/UNIT	TRANSFERRED TO	VOL	PG	TRANSFERRED TO	VOL	PG	TRANSFERRED TO	VOL	PG
BLDG 30	(SOUTH PINTAIL)	15	70						
A-186	L.D. REDA	920	908						
B-184	B.M. VENNETTI	895	987	D.C. & B.J. RUNGE	1029	211			
BLDG 31	(NORTH PINTAIL)	15	83						
A-146	L.M. & G.A. CORTRIGHT	888	525	L.M. & G.A. CORTRIGHT TRUST	1034	335			
B-148	R.A. FRITZSCHE	750	77						
C-150	R.C. & T.J. JACKSON	890	680						
BLDG 32	(NORTH PINTAIL)	15	91						
A-152	D.C. & R.G. SKINNER	751	889						
B-154	W.K. OLIVIER	751	554						
BLDG 33									
BLDG 34	N. PINTAIL DR	15	1						
A-160	G. & U. HARTLEY	793	647						
B-162	V. & B. WEBER	822	476						
C-164	R.J. & L.J. SRP	736	979	W.F. & J.E. SCHROEDER	1050	1111			
BLDG 35									
BLDG 36	(NORTH PINTAIL)	15	119-121						
A-170	R.D. STEWART	991	1015						
B-172	E.V. GORDON	759	1162	SOCIETY NATIONAL BANK OF BREKID CLEV. TRUSTEE	1009	857	KEY TRUST Co. of OHIO N.A. TRUSTEE	1027	1065
BLDG 37	(NORTH PINTAIL)	15	143-146						
A-174	E.F. & C.L. GLEASON	879	311						
B-176	R.V. HOUSEL	856	336						
C-178	E.J. & E.W. SCHMIDT	980	45	W.L. RISIUS TRUSTEE	1059	1029			
BLDG 38	(NORTH PINTAIL)	16	19-23						
A-180	W.N. & J.M. SCHWAIGER	778	1188						
B-182	H. & N. BURSTEIN	789	897						
BLDG 39									
BLDG 40	(WOODSONG WAY)	16	118-122						
40-188	C.T. GROTH	831	681						
BLDG 41	(WOODSONG WAY)	15	60-67						
190	L.J. & E.H. DOLAN	884	24						
BLDG 42	(WOODSONG WAY)	16	43-46						
A-192	H.E. HENDERSHOTT	897	138	E.E. VISCONSI TRUST	972	874			
BLDG 43									
BLDG 44	(WOODSONG WAY)	18	145-153						
A-196	K. & F. SORACE	853	156						
BLDG 45	(WOODSONG WAY)	17	84-92						
A-198	M. & U. STANTON-HICKS	821	1262						
BLDG 46	(WOODSONG WAY)	17	13-38						
200	R. JR & C. GOWLAND	829	714						
BLDG 47	(WOODSONG WAY)	17	8-16						
A-202	M. PENSIERO	814	749						
BLDG 48	(WOODSONG WAY)	18	33-38						
A-204	W.L. RISIUS	834	370	R.W. JR & D.S. CRAIG	1002	323			
BLDG 49									
BLDG 50	(TWIN CREEKS)	16	82-92						
A-240	L.R. CROUSE	797	765	J.M. ANDBERG	1001	478	J.M. ANDBERG	1072	801
B-242	P. & E. CHAPPLE	808	59						
BLDG 51	(TWIN CREEKS)	19	88-91						
A-244	R.T. & J. KRAUS	865	428						
B-246	K.M. CARLSON	895	72	F.M. MASTRUCCI	994	219			
BLDG 52	(TWIN CREEKS)	21	86						
A-	L.D. WEIMER	979	740						
BLDG 53	(TWIN CREEKS DRIVE)	17	8-16						
A-256	J. & B. COLLIER	817	560						
B-258	H. & H. DUNLOP	813	919						
BLDG 54	(TWIN CREEKS DRIVE)	16	148-155						
A-262	F. ADLER	809	284						
BLDG 55	(TWIN CREEKS DRIVE)	16	148-155						
A-264	G. & S. DEWILLERS	820	363	A.L. & C.R. HYDE	998	383			
A-266	J. & S. KALISER	861	369						
BLDG 56	(TWIN CREEKS)	16	82-92						
A-268	D. & J. PIPER	853	1086						
B-270	E.A. LEONETTI	797	758						
BLDG 57	(TWIN CREEKS)	16	72-76						
A-276	R.W. SIWIK	794	955						
BLDG 58	(TWIN CREEKS)	15	149-53						
A-278	D.J. JONES	770	1						
A-280	S.H. & R.L. SILVER	774	1079						
BLDG 59	(TWIN CREEKS)	16	35-42						
A-282	R.C. & S.C. MARCHANT	787	412	J.L. FRIEDMAN	1031	184	J.L. TRUST	2-5-96	1040 346
B-284	W.K. JNDERLIED	833	677						
BLDG 60									
BLDG 61	(OVERLOOK BROOK DRIVE)	18	145-153						
A-296	E. BELTON	852	84	D.M. LOOP	1008	1294	D. & S.K. LOOP	1032	1100
BLDG 62	(OVERLOOK BROOK DRIVE)	16	8-11						
A-298	T.J. & P.A. KREBS	848	1229						
B-300	A.M. KOVAL	942	258						
C-302	X. & C. WILSON	773	446						
BLDG 63	(OVERLOOK BROOK DRIVE)	16	82						
A-304	P.L. FARROW	796	130	C.D. FARROW, JR.	983	1035			
B-306	C.R. ZACHEM	796	1056	C.R. ZACHEM, TRUSTEE	1083	142			

BLDG/UNIT	TRANSFERRED TO	VOL	Pg.	TRANSFERRED TO	VOL	Pg.	TRANSFERRED TO	VOL	Pg.	TRANSFERRED TO	VOL	Pg.
BLDG 64 A-310	(OVERLOOK BROOK DRIVE) M. & S. DUFFY	16	14855 808 136									
BLDG 65 A-312	(OVERLOOK BROOK DRIVE) J. & J. HALLACK	16	12326 803 927									
BLDG 66 A-326 B-324 C-322	(OVERLOOK BROOK COURT) M. J. SWADEY R. C. HUGG, J.R. & P.S. LONGFELLOW C. J. & M.S. GIBLIN	16	3542 904 1279 879 16 786 1262									
BLDG 67 A-328 B-330	(OVERLOOK BROOK DRIVE) E. LAZIO	17	8492 848 979 821 301	M. H. JENSEN, TRUSTEE E.W. LAZIO TRUST	1030 1035	777 52						
BLDG 68 A-334 B-336 C-338	(OVERLOOK BROOK DRIVE) T. & J. JOHNSON M.D. YOUNG A. & S. ARMSTRONG	18	6268 837 18 883 445 842 143	C. ARNOLD	1011	1303						
BLDG 69												
BLDG 70 A-210 B-208	(HEATHER HILL) D. & C. SAZIMA V. & P. SCOCOS	17	8-16 815 1095 813 697									
BLDG 71 A-214 B-212	(HEATHER HILL) J. & I. GRUNZWEIG W. J. & E. J. O'BRIEN	17	131-138 829 754 849 243	N.R. GRUNZWEIG - TRUST W.D. + J.B. BENDER	1085 1023	1121 1166	J.B. BENDER TRUSTEE	1082	328			
BLDG 72												
BLDG 73 A-216	(HEATHER HILL) M. & R. WILLIAMS	18	62-68 837 528	M.M. + R.H. WILLIAMS	1020	945						
BLDG 74 A-222 B-220 C-218	(HEATHER HILL) C.C. SPATH W.F. HOTCHKIN W. & B. MILLER	17	119-122 831 1359 827 427 833 365	AT. & L.V. WARNER	1068	956						
BLDG 75 A-224	(HEATHER HILL) R. & E. BLAKE FAMILY TRUST	17	47-58 864 721									
BLDG 76 A-226	(HEATHER HILL) G. BIANCHINI & N. BEAN	17	47-58 818 676	B.F. PAWLKOWSKY	927 927	359 262	B.C. RICHARDS & B.H. WARNER	1001	433			
BLDG 77 A-232	(HEATHER HILL) J.F. & D.M. GALLAGHER	21	42-45 943 542									
BLDG 78												
BLDG 79												
BLDG 80												
BLDG 81												
BLDG 82												
BLDG 83												
BLDG 84												
BLDG 85												
BLDG 86												
BLDG 87												
BLDG 88												
BLDG 89												
BLDG 90												
BLDG 91												
BLDG 92												
BLDG 93												

BLDG/UNIT	TRANSFERRED TO	VOL	PG.	TRANSFERRED TO	VOL	PG.	TRANSFERRED TO	VOL	PG.	TRANSFERRED TO	VOL	PG.
BLDG 94												
BLDG 95												
BLDG 96												
BLDG 97												
BLDG 98												
BLDG 99												
BLDG 100												
BLDG 101 A-400	(FAIRWAY VIEW) B.C. KAGY	21 922-200	1-3 923									
BLDG 102 A-400	FAIRWAY VIEW #60 D.O.A. & J.B. Murphy 10-8-96	24 1074	21 73									
BLDG 103												
BLDG 104	FAIRWAY VIEW AMEND. #59	24	6	D.C. Meyeroff				24	6			
BLDG 105	FAIRWAY VIEW AMEND. #59	24	6	DW + SM martin				1061	445			
BLDG 106 A-420	(FAIRWAY VIEW) H.C. FALL, TRUSTEE	21 963-871	90									
BLDG 107 A-424	(FAIRWAY VIEW) G.L. RYE	21 944	48-51 918									
BLDG 108 A-422	(FAIRWAY VIEW) E. & S. GALLO	17 831	143-147 478	WG & JA PRYOR	990	1039						
BLDG 109 A-418	FAIRWAY VIEW - AMENDMENT #55 (8/8) M. FREW	23 1031	136-15 1324									
BLDG 110 A-414	FAIRWAY VIEW AMENDMENT #52 DR SEDGWY & JE BIXBY	22 859	196-21 1216									
BLDG 111 A-410	(FAIRWAY VIEW) T.J. SCHUMANN		1064	900								
BLDG 112 A-406	(FAIRWAY VIEW) PETER NICHOLAS DEV. CORP.	1052	410	J.J. JR. & D.M. GORCZYKA	1052	412						
BLDG 113 A-402	(FAIRWAY VIEW) S. PETERSON	19 878	31-35 926									
BLDG 114 A-425	(CHIPPING LANE) B.R. RESCH	19 855	16-18 433									
BLDG 115 A-426	(CHIPPING LANE) D.S. & B.J. MANNING	18 849	137-41 809	D.C. & J. MATZ	1026	949						
BLDG 116												
BLDG 117												
BLDG 118 A-429	(CHIPPING LANE) D.G. WIGGLESWORTH	18 850	145- 1216									
BLDG 119 A-430	(CHIPPING LANE) D.J. & R.M. JOYCE	18 860	76-79 316									
BLDG 120 A-431 B-432	(CHIPPING LANE) S.L. & M.R. DURCHSLAG P. & J. LEIKEN	19 896 861	59-62 678 935	R.E. & E.J. GOODMAN	1078	58						
BLDG 121												
BLDG 122 A-434	EAGLES POINTE R.A. & G.B. NEWMAN	21 971	103 12									

BLDG/UNIT	TRANSFERRED TO	VOL	Pg.	TRANSFERRED TO	VOL	Pg.	TRANSFERRED TO	VOL	Pg.	TRANSFERRED TO	VOL	Pg.
BLDG 123												
BLDG 124	(EAGLES POINTE)	18	95-98									
A-435	E. O. MARCH	841	253									
BLDG 125	(EAGLES POINTE)	18	137-141									
A-436	W.F. MUNDAY, JR. & R.M. MUNDAY	848	1275									
BLDG 126	(EAGLES POINTE)	18	33-38									
A-437	B. & T. HUNTER	835	337	M.J. BONEBRAKE	998	1116						
BLDG 127	(EAGLES POINTE) AMENDMENT 58	23	105	K.S. VERTES	1072	812						
A												
BLDG 128												
BLDG 129	(LONG DRIVE)	18	133									
A-440	G. & P. O'BRIEN	847	47	D.S. & B.J. MANNING	1026	1130						
BLDG 130	(LONG DRIVE)	18	121									
A-441	J. & A. HUTSON	844-574	853	1059								
THE AUBURN LAKES CONDOMINIUM Assoc. INC 818 974-386												
PAR #1	2.168 Ac											
PAR #2	4.032 Ac											
PAR #3	.649 Ac											
PAR #4	.860 Ac											
PAR #5	.092 Ac											
PAR #6	.922 Ac											
PAR #7	6.623 Ac											

DECLARATION OF CONDOMINIUM FOR THE WOODS AT AUBURN LAKES

BLDG/UNIT ADDRESS	ROAD NAME	DATE AC.	PLAT -	AMENDMENT	VOL	PG	TRANSFERRED TO:	VOL	PG.				
620	BLUE SPRUCE TRAIL	2/95	507	LEGEND #1	22	77	S. J. MITCHELL	1008	1066				
621	"	2/95	507	LEGEND #1	22	77	AMERI-CON AUBURN INC	1049	1108	D.G. & P.C. WINTON	1049 1102 4-29-96		
622	"	2/96	664	LEGEND #8			D.T. & C.H. WAREMAN	1041	982				
623	"	2/96	664	LEGEND #8			AMERI-CON	1041	982				
625	BLUE SPRUCE TRAIL	7/95	714	LEGEND #3	22	103	AMERI-CON AUBURN, INC.	1030	783	G. + W.K. SILVER	1030 785		
626	BLUE SPRUCE TRAIL	7/95	714	LEGEND #3	22	103	AMERI-CON AUBURN INC.	1032	664	J.G. + M.D. WALKER	1032 666		
627	BLUE SPRUCE TRAIL	5/95	597	LEGEND #2	22	91	J. M. TAYLOR	1015	897				
628	"	5/95	597	LEGEND #2	22	91	AMERI-CON AUBURN INC.	1020	380	M.H. BAUMGARTNER, TRUSTEE	1032 1081		
629	"	8/96	630	LEGEND #11	23	83	AMERI-CON AUBURN, INC.	1070	836	M.N. & M.C. CLEMENS	1020 388		
630	BLUE SPRUCE	8/96	630	LEGENDS #11	23	83	AMERI-CON AUBURN, INC.	1059	663	A.C. & B.W. DUTZEL	1070 838		
631	"	8/96	630	"	23	83	"						
632	BLUE SPRUCE TRAIL	4/96	530	LEGEND #9	23	59	AUBURN LAKES LTD PART (886-865)						
633	BLUE SPRUCE TRAIL	4/96	530	LEGEND #9	23	59	"						
634	"	5/96	597	LEGEND #2	23	61							
635	"	5/96	597	LEGEND #10	23	64	AMERI-CON AUBURN, INC.	1053	1390	J. McDERMITT	6-3-96 1053 1392		
636	"	7-17	489	LEGEND #13			AMERI-CON AUBURN, INC.	1060	379	M.H. & K. GEDENSWINGER	1060 381		
637	"	7-17	489	LEGEND #13			AMERI-CON AUBURN, INC.	1061	770	EL + JR BRAVO	1061 772		
638	BLUE SPRUCE TRAIL	8-95	528AC	LEGEND #4	22	113	AMERI-CON AUBURN, INC.	1043	56	J.R. PERKINS	1043 58		
639	BLUE SPRUCE TRAIL	8-95	528AC	LEGEND #4	22	113	AMERI-CON AUBURN, INC.	1026	647	A.C. & D.K. BARBER	1026 649 *		
640	"	1996		LEGEND #16	24	51	AMERICAN AUBURN, INC.	1078	39	J.C. SCHILL TRUSTEE + 1/3 R.J. SCHILL	1078 40		
641	"	1996		"	"	"							
FOR AC SEE MAP		886	865										
DOGWOOD LANE (PVT)		2/95	634	LEGEND 1 - ORIGINAL		22	77						
DOGWOOD LANE (6.634 AC)		5/95	634	LEGEND 2 - AMENDMENT #1		22	91						
550	DOGWOOD LANE (LEAVING 4.275 AC)	4/96	344	LEGENDS 17-AMENDMENT -16		24	58	AMERICAN-AUBURN, INC.	1079	670	S + G DOWNS	1079 672	
506	DOGWOOD LANE	LEAVING 4.063 AC	1196	312AC	LEGEND 15 AMENDMENT #17		24	72					
507	DOGWOOD LANE	LEAVING 6.367AC	7/2/95	267AC	LEGEND 5 - AMENDMENT #4		23	02	AMERI-CON AUBURN, INC.	1030	876	W.H. & L.B. ANDREWS	1030 878
508	DOGWOOD LANE	LEAVING 5.581 AC	7/95	349AC	LEGEND 7 - AMENDMENT #6		23	28	AMERI-CON AUBURN, INC.	1035	273	A.S. + C.J. GRINA	1035 275
509	"	LEAVING 5.060 AC	7/96	521AC	LEGEND 12 - AMENDMENT #11		23	93	AMERI-CON AUBURN, INC.	1060	1215	R. + F. WILSON	1060 1217
510	DOGWOOD LANE	LEAVING 5.93 AC	9/29/95	437AC	LEGEND 6 - AMENDMENT #5		23	06	AMERI-CON AUBURN INC.	1029	120	J.H. & G.L. MORRISH	1029 122
516A	DOGWOOD LN.	LEAVING 4.792 AC	10/1/96	341AC	LEGENDS 15 AMENDMENT 14		24	44					
516B	"	"	"	"	" 15 " 14		24	44					
516C	DOGWOOD LN.	"	"	"	" 15 " 14		24	44	AMERI-CON AUBURN INC.	1075	381	D.L. & S.S. MAAKEE	1075 383
TOT LOT 912A		2/95		LEGEND #1 - ORIGINAL		22	77						
WELL #3 - .19AC		2/95		" " " "		22	77						
WATER PLANT .442AC		2/95		" " " "		22	77						
DOGWOOD LANE		2/95		LEGEND #1 - ORIGINAL		22	77						

AUBURN LAKES